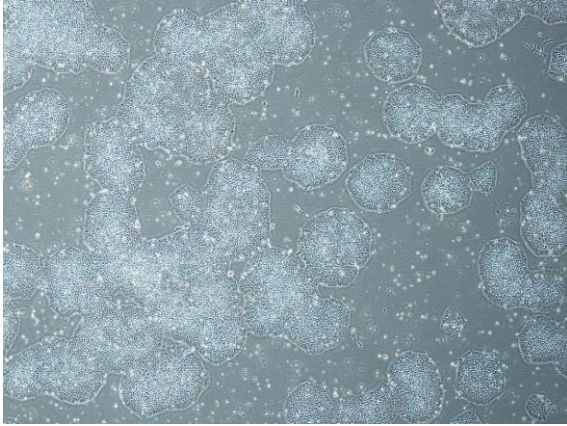


## 【 CiRA-j-1370 】 Morphology of iPSC colonies

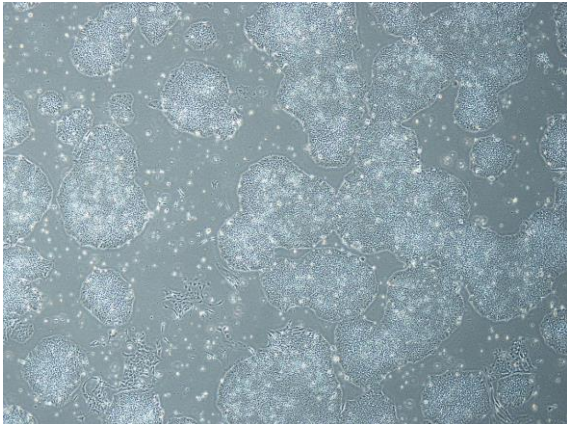
CiRA-j-1370-A: passage-3



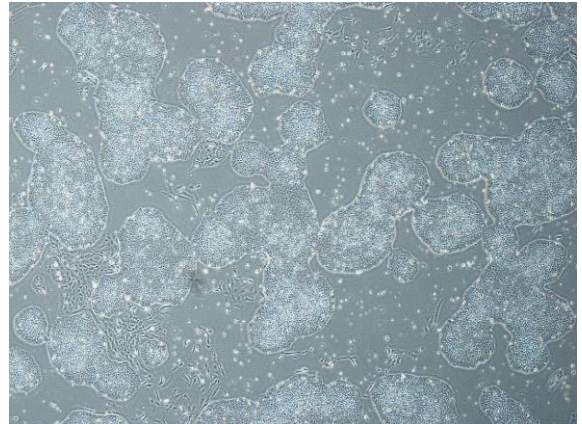
CiRA-j-1370-B: passage-3



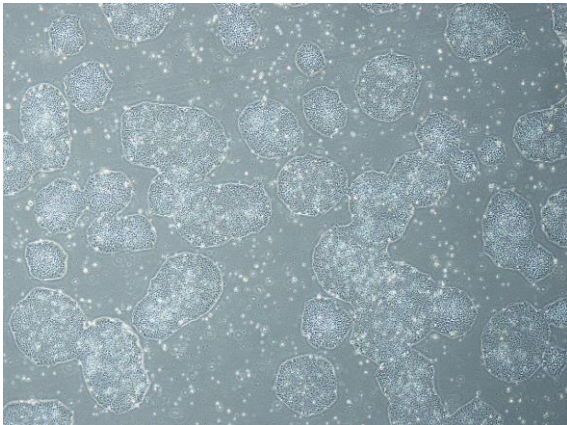
CiRA-j-1370-C: passage-3



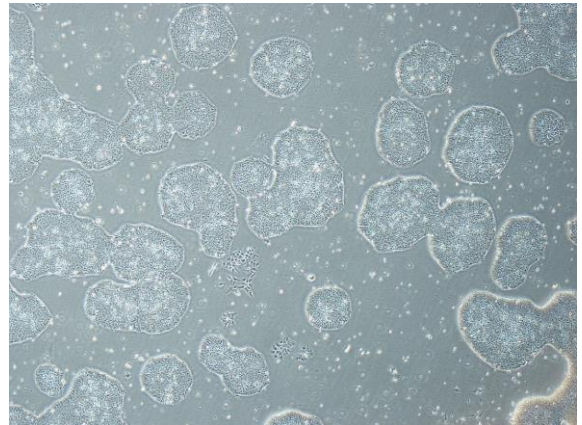
CiRA-j-1370-D: passage-3



CiRA-j-1370-E: passage-3



CiRA-j-1370-F: passage-3



( All images were captured at 4x magnification )